

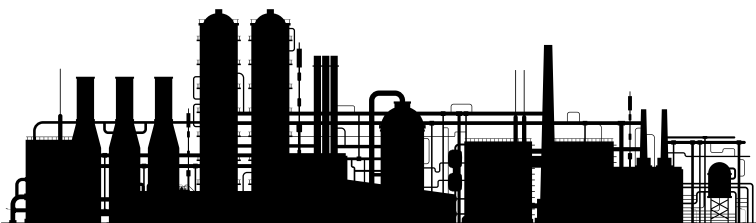


Engineering Solution
& Fabricator

GAURAV ENGINEERING

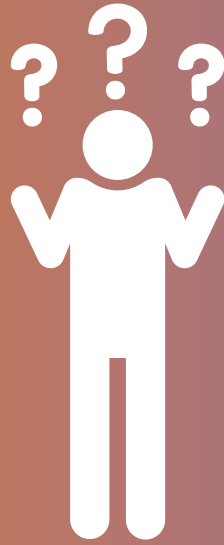
AN ISO 9001:2015 CERTIFIED COMPANY

**“Fabrication is the fusion of Imagination
and Engineering”.**



www.gauravengineering.in

GET TO KNOW US



SHASHI RANJAN KUMAR

MANAGING DIRECTOR

Incepted in the year 2014 Bahadurgarh, Haryana. We Gaurav Engineering are expert in solutions of equipment & machinery for Agrochemical, Pharmaceutical, Cosmetics, Polymer and Paint industry. We provide Turnkey projects solutions for Agrochemical industries such as S.C Plant, E.C Plant, W.D.G Plant & W.D.P Plant.

OUR INFRASTRUCTURE

We are equipped with 3 manufacturing units with total working area of 45000Sq.ft. area with high tech machineries to provide best fabrication to our valuable clients.

OUR VISION

Our vision is to be a one stop solutions for Equipment and Machineries by providing best quality products with hassle free service too.

OUR MISSION

Our organization is backed by skilled and qualified team of experts who have adequate experience in Agrochemical, Pharmaceutical & Chemical industries with deep understanding of its specification requirements.



1 YEAR WARRANTY APPLICABLE ON ALL EQUIPMENTS AND MACHINERIES WITH TERMS & CONDITIONS APPLIED.



WE GAURAV ENGINEERING ARE ISO 9001:2015 CERTIFIED FOR MANUFACTURING & SUPPLY OF PROCESS EQUIPMENTS & MACHINERIES.



GeM
Government
e Marketplace

Efficient • Transparent • Inclusive

OUR EQUIPMENTS



REACTION VESSEL

A chemical reactor is an enclosed volume in which a chemical reaction takes place.

- Vessel type - Limpet coil & Jacketed
- Volume range - 20LTR. to 30KL
- MOC grade - S.S.316L, S.S.304L & I.S2062
- Pressure range - ATM pressure to 30KG/CM3
- Temperature range - ATM Temp. up to 400Deg. celcius
- Design as per ASME standard and design of reaction vessel.



MIXING VESSEL

Mixing vessel are used in chemical process system to mix multiple liquid together to create new compound or product

- Volume range - 20LTR. to 100KL
- MOC grade - S.S.316L, S.S.304L & I.S2062
- Pressure range - ATM pressure to 30KG/CM3
- Temperature range - ATM Temp. upto 400Deg. celcius
- Design as per ASME standard and design of reaction vessel .



STORAGE VESSEL

Storage vessels are big containers, often cylindrical & Cuboidal that are designed to hold large quantity of liquids or gases.

- Vessel type - Vertical, Horizontal & conical shapes
- Volume range - 5LTR. to 50KL
- MOC grade - S.S.316L, S.S.304L & I.S2062
- Support type - Saddle, Bracket or Leg support
- Design as per ASME standard and design of reaction vessel.

HEAT EXCHANGER

Heat exchanger are used and designed to facilitate indirect heat transfer between the two movable fluid.



- Type - Shell and tube type heat exchanger
- MOC grade - S.S.316L, S.S.304L & I.S2062
- Capacity range - 1SQM. to 50SQM.
- Tube type - Seamless & ERW
- Design as per ASME standard and TEMA codes

DISTILLATION COLUMN

A fractionating column is an equipment used in the distillation of liquid mixture to separate the mixtures into it's components parts based on their difference in velocity.



- Column dia range - 200NB to 3mtr.
- Column height range - 3mtr to 30mtr.
- MOC grade - S.S.316L & S.S.304L

KETTLE REBOILER

Reboiler are heat exchangers typically used to provide heat to the bottom of industrial distillation columns & vaporize a fraction of product.



- Usage - In distillation columns
- Design pressure - As per requirement
- Support type - Saddle, Bracket or Leg support
- Design as per ASME standards and TEMA code

OUR MACHINERIES

RIBBON BLENDER



Ribbon blender are equipment used for mixing powder and granular based products thoroughly with the help of helical ribbon type blade.

- Volume range - 50kg to 10,000kg
- MOC grade - S.S.316L, S.S.304L & I.S2062
- Manual & Automated liquid spray system provided.
- Semi automatic and fully automatic models available

NUTSCHE FILTER



Nutsche filter is a batch filtration equipment that uses vacuum or enclosed pressure in closed vessel.

- Usage - Perform separation of solid matter from liquid
- size range - 10LTR. TO 5000LTR.
- Easy cleaning of filter media
- Easy perforated plate arrangement

VIBRO SIFTER



A Vibro sifter is a machine that sifts or separate different material according to different sizes by using the principle of gyratory vibration.

- Size range - Screening dia 12", 20", 30", 36", 48" & 72"
- Smooth and noiseless operation at high speed
- Easy dismantling and cleaning facility for contact parts

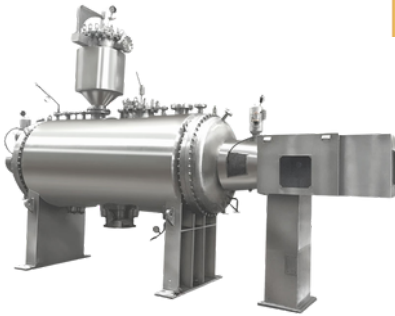
HOMOGENIZER PUMP



Homogenizer is a positive displacement pump. When coarse or large particles are passed through a narrow orifice under high pressure, The large particles is converted into fine particles.

- MOC grade - S.S.316L, S.S.304L & I.S2062
- Model no. - HGP-10, HGP-20, HGP-30 & HGP-50 are provided
- Semi automatic and fully automatic models available

R.V.P.D



A Rotary vacuum paddle dryer is used to obtain dry powder from a wet cake or solutions in a batch process under vacuum condition.

- Volume range - 50kg to 3000kg
- MOC grade - S.S.316L, S.S.304L & I.S2062
- Temp. range - 80deg to 350deg celcius
- Easy quick and reliable operation
- Semi-automatic & jacketed arrangements provided.

PILOT PLANT



A Pilot plant is a small scale model that converts a Lab - scale formula into a commercial product by developing a reliable and practical manufacturing technique.

- Volume range - 5LTR. to 0.1KL
- Type - G.M.P Models provided
- MOC grade - S.S.316L & S.S.304L
- Usage - Pharmaceutical, Agrochemical & Paint industry etc.,
- Design as per ASME / BPE Standards.



DOUGH MIXER

It is an Machinery used for mixing of wet powder for preparing homogenous dough with help of paddle type blade.

- Volume range - 50kg - 10,000kg
- MOC grade - S.S.316L, S.S.304L & I.S2062
- Manual & Automated liquid spray system provided.
- Semi automatic and fully automatic models available

SREW CONVEYER

It is used to convey bulk material from one position to another (vertically, Horizontally or at an incline) and are one of the most reliable methods of conveyance.

- MOC grade - S.S.316L, S.S.304L & I.S2062
- Designed to ensure smooth operations
- Jacketed designs to heat or cool the material during conveying
- Cantilever screw design.

VACUUM TRAP

A Vacuum trap condenses vapors into another state (solid/liquid), also known as cold trap.

- MOC grade - S.S.316L & S.S.304L
- Available in multiple sizes
- Design as per ASME Standards.



DYNO MILL OR BEAD MILL

Dyno mill is a agitator bead mill with horizontal grinding chamber for dispersion and finest wet grinding in a completely enclosed system .

- Volume range - lab grade to High production scale
- Output - Particles size from 2 to 5 micrometer
- Semi automatic and fully automatic models available
- Easy operation and easy to service.
- Highest efficiency achieved with hassle free operation
- Usage in Agrochemicals, Pharmaceutical, Paint & Ink industry.



Specifications

G.E SERIES

MODEL NO.	CAPACITY	MOTOR	COOLING WATER
G.E.D.M-01	1 LTR.	2HP	50-80ltr/hr
G.E.D.M-15	15 LTR.	10HP	600-800ltr/hr
G.E.D.M-30	30 LTR.	20HP	700-1400lt/hr
G.E.D.M-60	60 LTR.	30HP	1600-2100ltr/hr



FLUID BED DRYER(FBD)

Fluid Bed Dryer is an machine that is use extensively in the bulk industry to reduce the moisture of powder and granular products.

- Volume range - 15Kg to 300Kg
- MOC - GMP & Non-GMP
- Output - 50kg/hr. to 700kg/hr.
- Heating media - Steam coils, diesel & LPG kits provided
- Semi automatic and fully automatic models available
- Electrical panel with complete instrumentation
- Smooth and noiseless operation achieved

Specifications

G.E SERIES

MODEL NO.	VOLUME	MOTOR	OUTPUT
G.E.F.D-15	15KG	5HP	50-80kg/hr
G.E.F.D-30	30KG	7.5HP	90-120kg/hr
G.E.F.D-60	60KG	10HP	170-200kg/hr
G.E.F.D-120	120KG	15HP	300-330kg/hr
G.E.F.D-180	180KG	20HP	500-550kg/hr

BASKET EXTRUDER



Basket Extruder is a machine widely used to get extrudes from wet mass.

- Diameter range - 350mm to 500mm
- MOC - GMP & Non-GMP
- Uniform extrusion pressure across entire screen area
- Easy dismantling for cleaning purpose
- High yield and improved flowability
- Semi automatic and fully automatic models available
- Smooth and noiseless operation achieved

Specifications

G.E SERIES

MODEL NO.	DIAMETER	MOTOR	OUTPUT
G.E.B.E-350	14"	15HP	60-80kg/hr
G.E.B.E-400	16"	20HP	100-120kg/hr
G.E.B.E-450	18"	25HP	140-160kg/hr
G.E.B.E-500	20"	30HP	180-200kg/hr

TURNKEY PROJECTS FOR AGROCHEMICAL

Suspension Concentrates (S.C PLANT)

- PRE BLENDER - HIGH SPEED MIXER
- POST BLENDER - SLOW SPEED MIXER
- HOMOGENIZER PUMP
- DYNO MILL
- GUM MIXER
- BUFFER TANK



Water Dispersible Granules (W.D.G PLANT)

- RIBBON BLENDER
- DOUGH MIXER
- BASKET EXTRUDER
- F.B.D
- VIBRO SIFTER



Emulsifiable Concentrate (E.C PLANT)

- SLOW SPEED MIXING VESSEL
- STORAGE/HOLDING VESSEL
- TRANSFER PUMP



Herbicide Plant

- MIXING VESSEL
- HOLDING VESSEL
- TRANSFER PUMP



Solvent Recovery Plant (S.R.P)

- **DISTILLATION KETTLE/REBOILER**
- **DISTILLATION CULUMN**
- **STRUCTURE PACKING**
- **HEAT EXCHANGER**
- **REFLUX DRUM**
- **RECEIVER**





OUR VALUABLE CLIENT



 **100+ Satisfactorily clients**
All over India

www.gauravengineering.in

SEND ENQUIRY
With Click Here



Engineering Solution
& Fabricator

GAURAV ENGINEERING

GET
IN TOUCH

CONTACT US



+91 87 0876 0771
+91 79 8815 9443



gaurav.marketing2014@gmail.com
gauravsales2014@gmail.com



www.gauravengineering.in



Netaji nagar, Nizampur road,
parnala industrial area
Bahadurgarh-124507
Haryana[India]

FOLLOW US



[Gauravengineering2014](https://www.youtube.com/channel/UCGauravEngineering2014)



[gaurav_engineering2014](https://www.instagram.com/gaurav_engineering2014)

